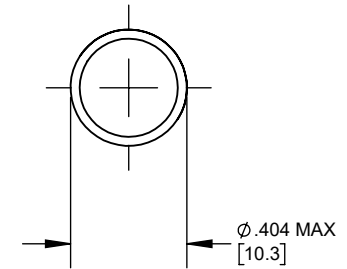
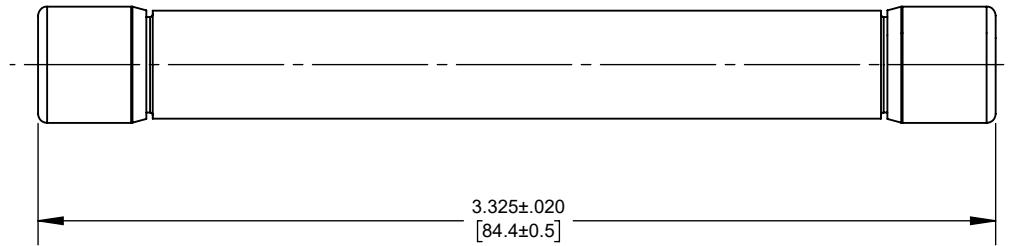


REV.	DATE	ECO	DESCRIPTION	BY	CK	APP
A	12/19/2023	18057	INITIAL RELEASE	LA	N/A	SEE ECO



OUTLINE DIMENSIONS
NOT TO BE USED FOR PRODUCTION

DIMENSIONS IN []
ARE MILLIMETERS

HP15M32R
HP15M30R
HP15M25R
HP15M20R
HP15M15R
HP15M12R
HP15M10R
HP15M8R
HP15M7R
HP15M6R
HP15M5R
HP15M4R
CATALOG NUMBER

<i>Approval stage / Etat d'approbation:</i> APPROUVÉ POUR FABRICATION / APPROVED FOR MANUFACTURING		Product Class:/ Product Type: PV FUSE	
		Product amp rating:/ Voltage rating: 4-32A 1500VDC	
<i>Initial ECO / ECO intiale:</i> ECO-18057-000		Title / Titre: OUTLINE HP15M(4-32)R	
<i>Draw by / Dessiné par:</i> Luis ARMENTA		Date : 1/15/2024	
<i>Checked by / Vérifié par:</i> Alma Balcazar		Date : 1/15/2024	
Electrical Power 374 MERRIMAC STREET NEWBURYPORT, MA 01950		Éch / Scale : 1.5:1 Format / Size : A	
		Drawing / de dessin: OUT-242136	
		Weight : Masse :	
		Rev : A Rév :	
		Part / Article: SEE TABLE	
		Page : 1/1	

Ce plan strictement confidentiel est la propriété exclusive de la société MERSEN sans l'autorisation écrite de laquelle il ne peut être ni reproduit, ni copié, ni communiqué à des tiers.
 This drawing and specifications there on is property of MERSEN and shall not be reproduced or copied or used in whole or in part as the base for manufacture or sale of item without written permission.