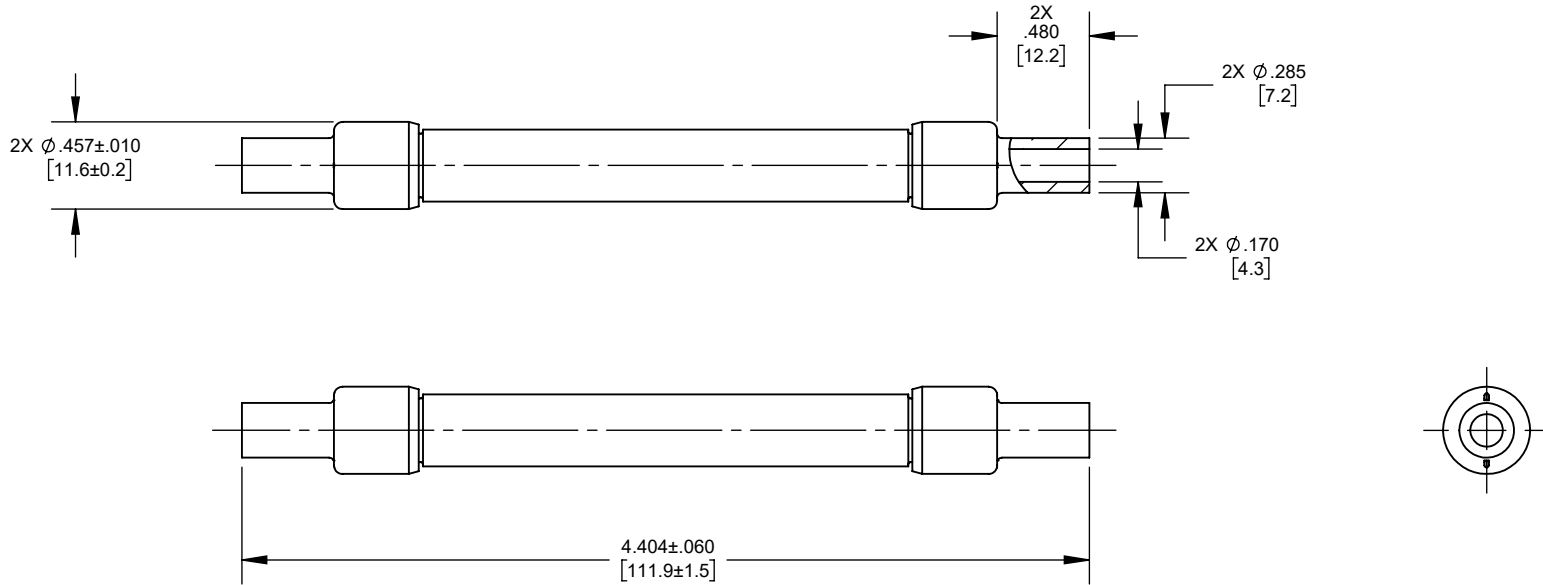


REV.	DATE	ECO	DESCRIPTION	BY	CK	APP
A	8/18/2022	16979	INITIAL RELEASE	MKR	N/A	SEE ECO
B	10/20/2022	16923	UPDATED CRIMP CAPS DESIGN	PG	N/A	SEE ECO
C	7/24/2024	18548	UPDATED TITLE	LA	N/A	SEE ECO



**OUTLINE DIMENSIONS**  
NOT TO BE USED FOR PRODUCTION

DIMENSIONS IN [ ] ARE MILLIMETERS

HP15M32RCC8
HP15M30RCC8
HP15M25RCC8
HP15M20RCC8
HP15M15RCC8
HP15M12RCC8
HP15M10RCC8
HP15M8RCC8
HP15M7RCC8
HP15M6RCC8
HP15M5RCC8
HP15M4RCC8

CATALOG NUMBER

Approval stage / Etat d'approbation: <b>APPROUVE POUR FABRICATION / APPROVED FOR MANUFACTURING</b>		Product Class: / Product Type: <b>PV FUSE</b>	
Initial ECO / ECO initiale: <b>ECO-18548-000</b>		Product amp rating: / Voltage rating: <b>4A - 32A 1500VDC</b>	
Draw by / Dessiné par: <b>Luis ARMENTA</b>	Date: <b>7/26/2024</b>	Title / Titre: <b>OUTLINE HP15M(4-32)RCC8</b>	Weight / Masse: 
Checked by / Vérifié par: <b>Alma Barcazar</b>	Date: <b>7/26/2024</b>	Drawing / de dessin: <b>OUT-1203381</b>	Rev: <b>C</b> Rév:
Electrical Power 374 MERRIMAC STREET NEWBURYPORT, MA 01950	Éch / Scale: <b>1:1</b> Format / Size: <b>A</b>	Part / Article: <b>SEE TABLE</b>	Page: <b>1/1</b> 

Ce plan strictement confidentiel est la propriété exclusive de la société MERSEN sans l'autorisation écrite de laquelle il ne peut être ni reproduit, ni copié, ni communiqué à des tiers.  
This drawing and specifications there on is property of MERSEN and shall not be reproduced or copied or used in whole or in part as the base for manufacture or sale of item without written permission.