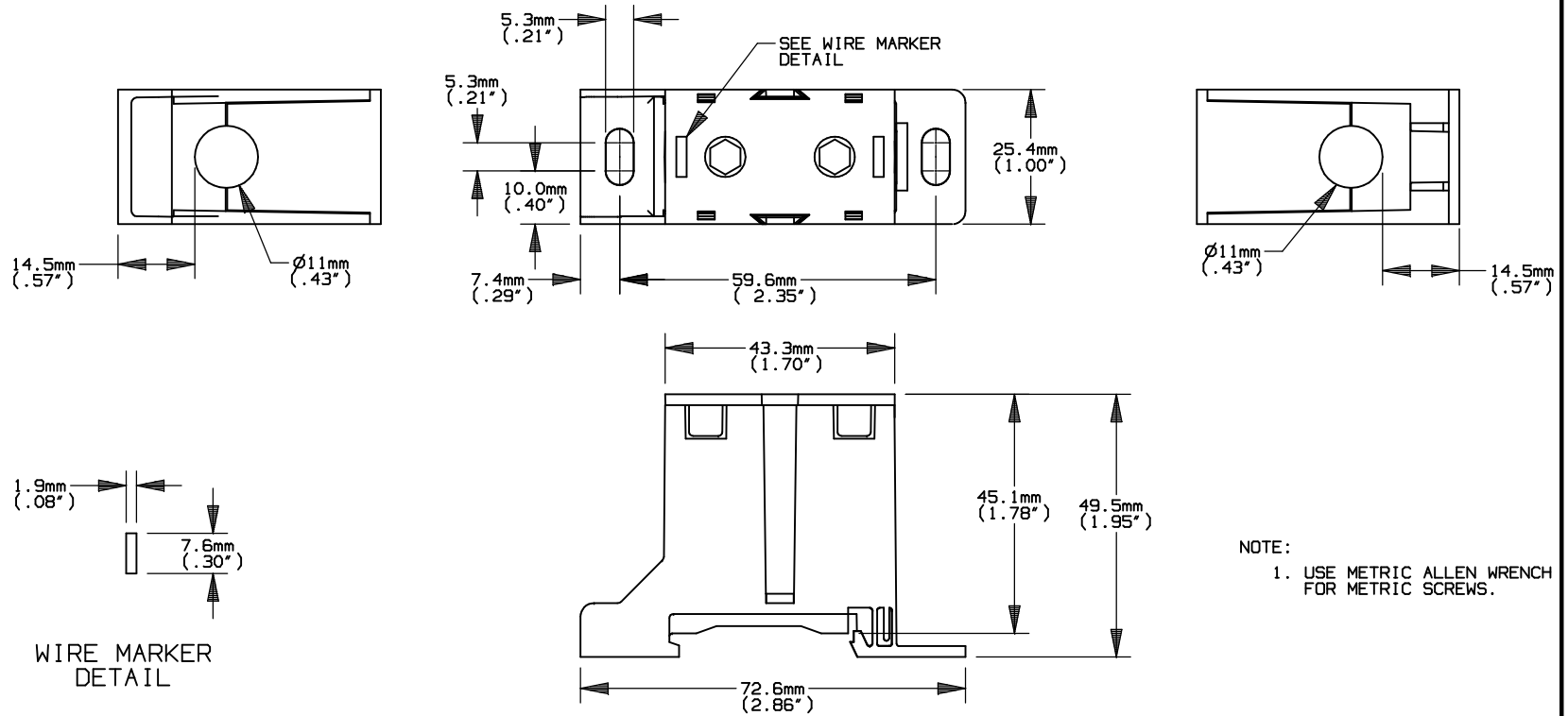


REV	DATE	ECO	DESCRIPTION	BY	CK	APP
B	7/19/04	N/A	ADDED NOTE 1	ELO	N/A	N/A



NOTE:
1. USE METRIC ALLEN WRENCH FOR METRIC SCREWS.

P/N	CONN. MAT'L.	AMP RATING	LINE				LOAD				UL		CSA	
			RANGE	TORQUE	RANGE	TORQUE	RANGE	TORQUE	RANGE	TORQUE	FILE #	GUIDE #	FILE #	CLASS
			AWG/kcmil	in/lbs	mm ²	N-m	AWG/kcmil	in/lbs	mm ²	N-m				
FSPDB1A	AL	175	2/0-#14	2/0-#1 100 #2-#6 80 #8-#14 35	70-2.5	70-50 11.4 35-16 9 10-2.5 3.9	2/0-#14	2/0-#1 100 #2-#6 80 #8-#14 35	70-2.5	70-50 11.4 35-16 9 10-2.5 3.9	E73571	XCFR2	69363	6228
FSPDB1C	Cu	175	2/0-#14	2/0-#1 100 #2-#6 80 #8-#14 35	70-2.5	70-50 11.4 35-16 9 10-2.5 3.9	2/0-#14	2/0-#1 100 #2-#6 80 #8-#14 35	70-2.5	70-50 11.4 35-16 9 10-2.5 3.9	E73571	XCFR2	69363	6228



MERSEN USA NEWBURYPORT-MA, LLC
374 MERRIMAC STREET
NEWBURYPORT, MA 01950

FINGER-SAFE
POWER DISTRIBUTION BLOCK
600V

OUTLINE DIMENSIONS
NOT TO BE USED FOR PRODUCTION

PRODUCT MANAGER

DESIGN ENGINEER

SIGN:
DATE:

SIGN:
DATE:

{1}2/0-#14 X {1}2/0-#14
{1}70-2.5mm² X {1}70-2.5mm²

700900