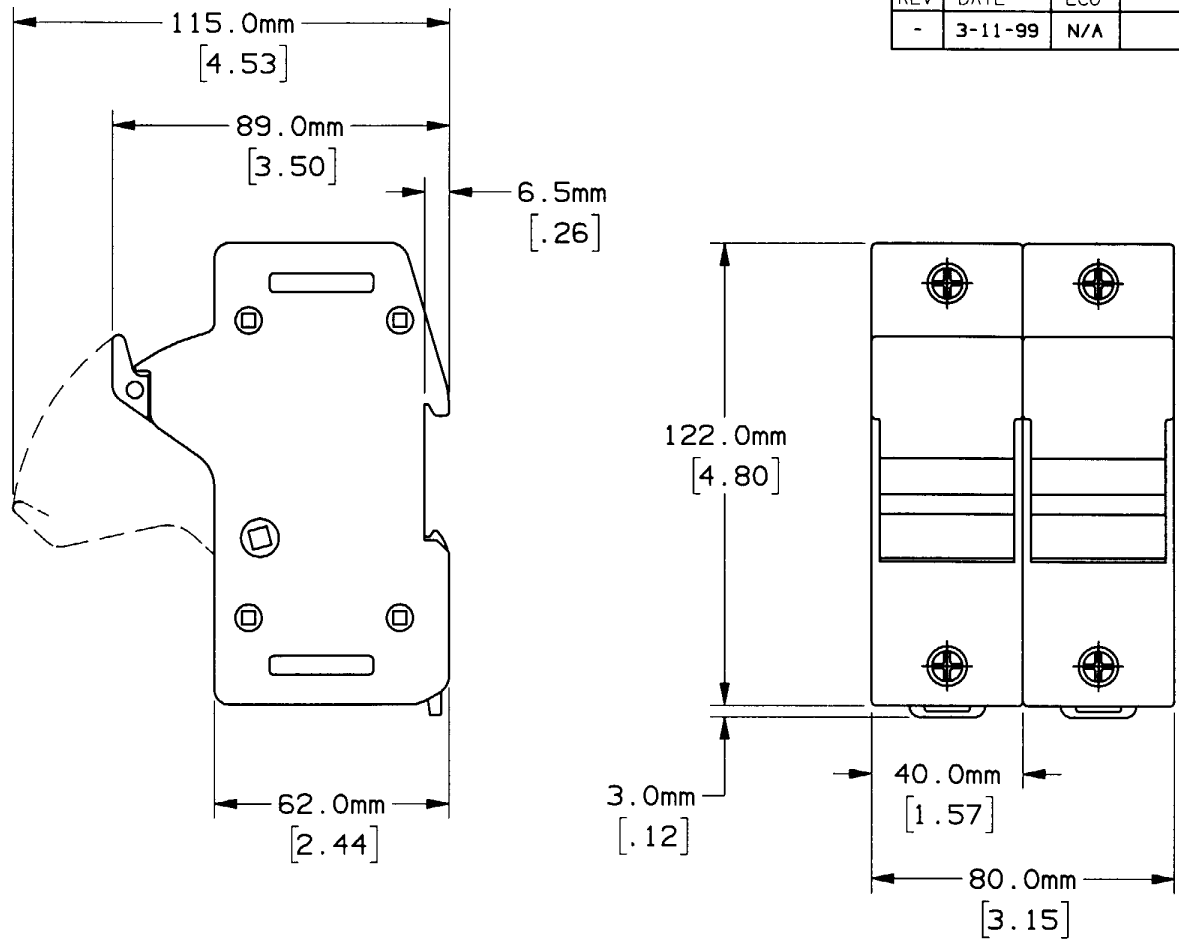


REV	DATE	ECO	DESCRIPTION	BY	CK	APP
-	3-11-99	N/A	INIT RELEASE	GCT	N/A	N/A



P/N	CONN TYPE	RMS SYM RATING	TORQUE (IN-LBS)	WIRE			U/L		CSA
				WIRE RANGE	°C	TYPE	FILE NO.	GUIDE NO.	REPORT NO.
US6J2 US6J2I	PRESSURE PLATE	200K	45	#2-#14	75	CU	E52283	IZLT	LR32169

NOTES:

1. MATERIAL COMPOSITION AND RATING THERMOPLASTIC - 150°C RTI.
2. DIMENSIONS ARE mm/[INCHES].
3. TOLERANCES ARE ±.01 UNLESS OTHERWISE SPECIFIED.

**GOULD** 374 MERRIMAC STREET  
NEWBURYPORT, MA 01950

PRODUCT MANAGER  
SIGN: *Michael Paulsen*  
DATE: 4-5-99

DESIGN ENGINEER  
SIGN: *Elizabeth Kyp...*  
DATE: 4-5-99

FUSE HOLDER, 600V-60A, 2 POLE  
CLASS J

OUTLINE DIMENSIONS  
NOT TO BE USED FOR PRODUCTION

700433