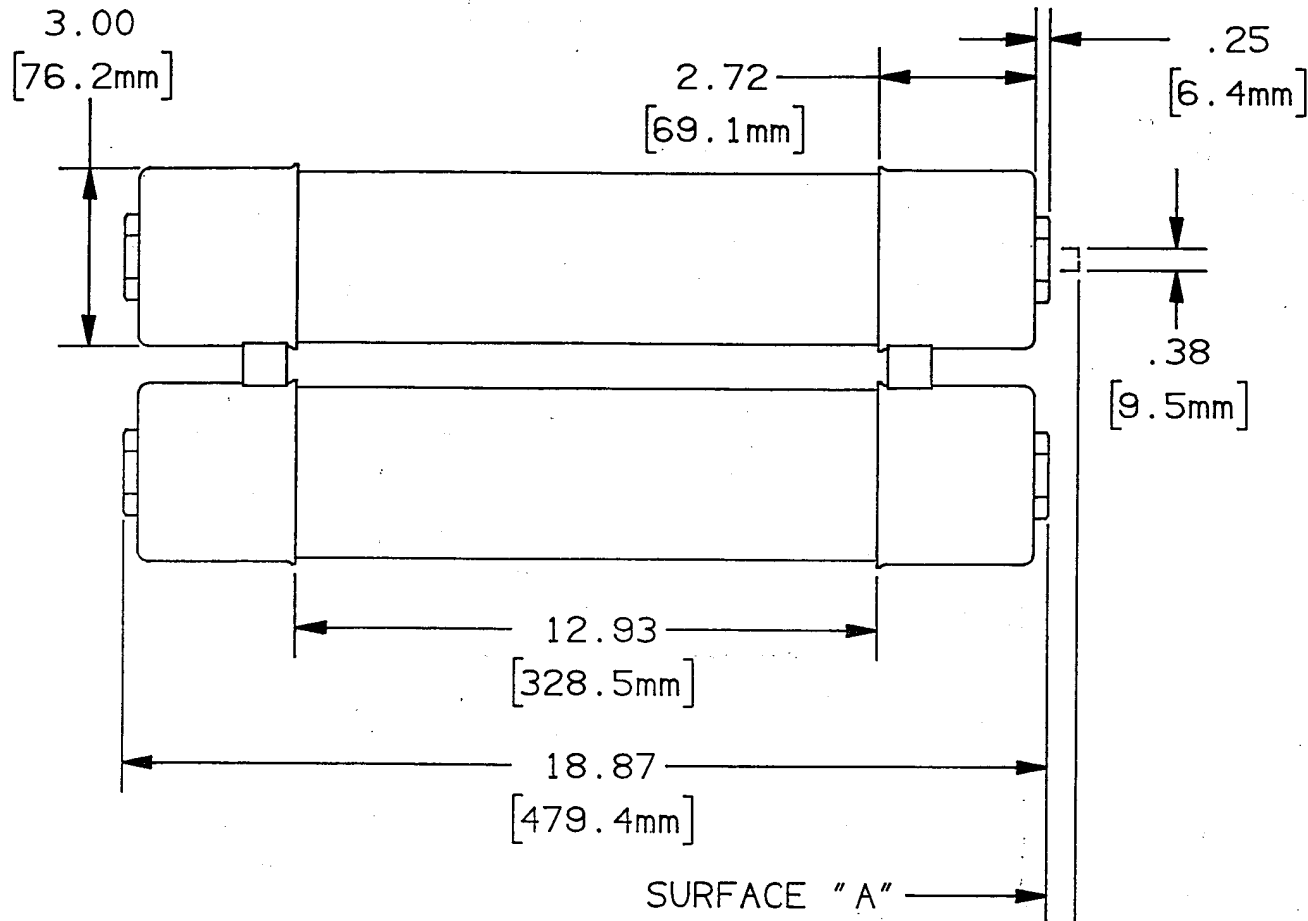


24395



INDICATOR FLUSH WITH SURFACE "A" BEFORE FUSE OPENS.  
 "A" BEFORE FUSE OPENS.  
 INDICATOR EXTENDS .50 (12.7mm) AFTER FUSE OPENS.  
 INDICATOR EXERTS 2 LBS FORCE AT END OF TRAVEL

RATING	CATALOG NO.
65E	A155F2D0R0-65E
80E	A155F2D0R0-80E
100E	A155F2D0R0-100E

**GOULD** 374 MERRIMAC STREET  
 NEWBURYPORT, MA 01950

PRODUCT MANAGER  
 SIGN: *H. C. Cline*  
 DATE: 5/18/93

DESIGN ENGINEER  
 SIGN: *L. O'Shields*  
 DATE: 1/29/93

MEDIUM VOLTAGE AMP-TRAP  
 E-RATED GENERAL PURPOSE  
 CURRENT LIMITING FUSE  
 CS-3 SERIES, 65E TO 100E, 15.5KV MAX

OUTLINE DIMENSIONS  
 NOT TO BE USED FOR PRODUCTION

24395