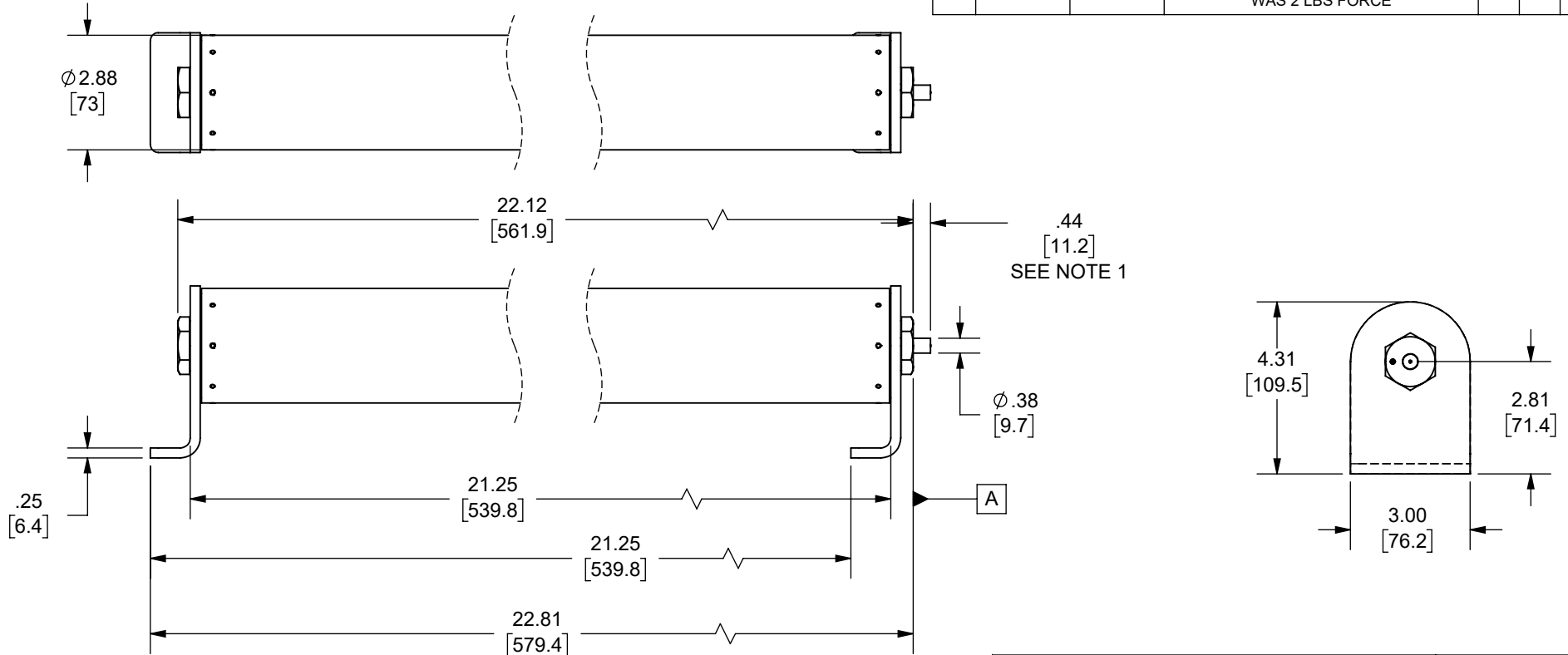


REV.	DATE	ECO	DESCRIPTION	BY	CK	APP
-	2/6/2020	N/A	INITIAL RELEASE	LDB	N/A	N/A
B	5/22/2024	18032	UPDATED TITLE BLOCK, ADDED NOTES, DIM.44[11.2] WAS .50[12.7], 1 LBS FORCE WAS 2 LBS FORCE	YF	N/A	SEE ECO



OUTLINE DIMENSIONS
NOT TO BE USED FOR PRODUCTION

DIMENSIONS IN []
ARE MILLIMETERS

NOTES:

1. INDICATOR IS FLUSH WITH SURFACE **A** BEFORE FUSE OPENS
INDICATOR EXTENDS .44 IN. [11.2mm] AFTER FUSE OPENS AND EXERTS AN 1 LBF AT THE END OF TRAVEL.

Approval stage / Etat d'approbation: APPROUVÉ POUR FABRICATION / APPROVED FOR MANUFACTURING		Product Class:/ Product Type: MEDIUM VOLTAGE	
Initial ECO / ECO intiale: ECO-18032-000		Product amp rating:/ Voltage rating: 65-100E 15.5kV	
Draw by / Dessiné par: Yadyra Fang	Date : 6/14/2024	Title / Titre: OUTLINE A155C1D0R0-(65-100)E	
Checked by / Vérifié par: Luis ARMENTA	Date : 6/14/2024		
Electrical Power 374 MERRIMAC STREET NEWBURYPORT, MA 01950		Drawing / de dessin: 702353	
Éch / Scale : 1:4 Format / Size : A		Part / Article: SEE TABLE	Page : 1/1
Ce plan strictement confidentiel est la propriété exclusive de la société MERSEN sans l'autorisation écrite de laquelle il ne peut être ni reproduit, ni copié, ni communiqué à des tiers. This drawing and specifications there on is property of MERSEN and shall not be reproduced or copied or used in whole or in part as the base for manufacture or sale of item without written permission.		MERSEN	

A155C1D0R0-100E
A155C1D0R0-80E
A155C1D0R0-65E
CATALOG NUMBER