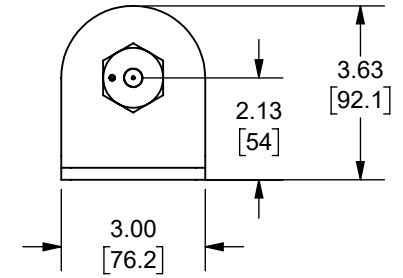
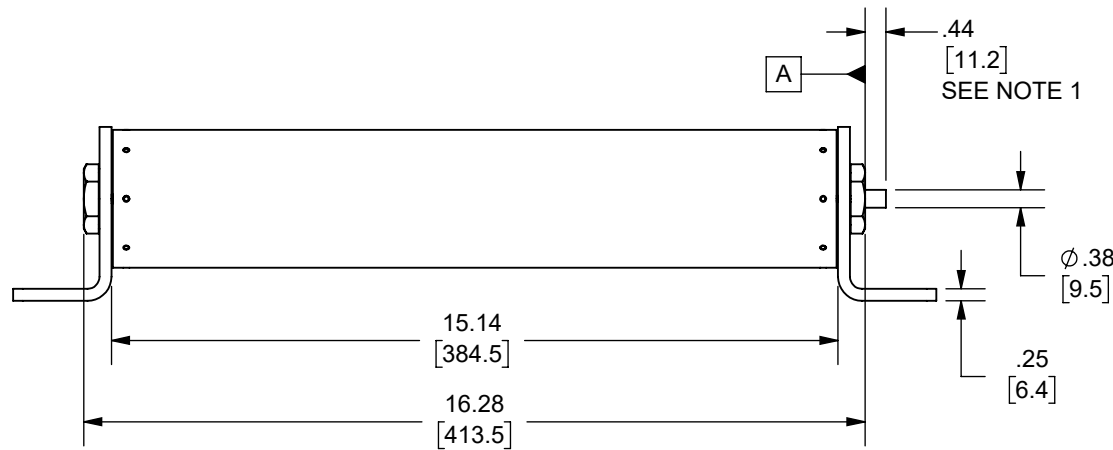


REV.	DATE	ECO	DESCRIPTION	BY	CK	APP
-	6/8/2015	1786	INITIAL RELEASE	KMH	N/A	N/A
A	1/25/2024	18032	REDRAWN FROM CADRA, UPDATED TITLE BLOCK AND NOTES, DIM .44[11.2] WAS .50[12.7]	ABT	N/A	SEE ECO

NOTES:

- INDICATOR IS FLUSH WITH SURFACE [A] BEFORE FUSE OPENS INDICATOR EXTENDS .44 IN. [11.2 mm] AFTER FUSE OPENS AND EXERTS AN 1 LBF AT THE END OF TRAVEL



OUTLINE DIMENSIONS  
NOT TO BE USED FOR PRODUCTION  
DIMENSIONS IN [ ] ARE MILLIMETERS

Approval stage / Etat d'approbation: <b>APPROUVÉ POUR FABRICATION / APPROVED FOR MANUFACTURING</b>	Product Class:/ Product Type: MEDIUM VOLTAGE AMP-TRAP BOLT-IN/ E-RATED	Title / Titre: <b>OUTLINE</b>		Weight : Masse :
Initial ECO / ECO intiale: <b>ECO-18032-000</b>	Product amp rating:/ Voltage rating: 10E - 100E 8.25kV MAX.	Date : <b>6/14/2024</b>		
Draw by / Dessiné par: <b>Yadyra Fang</b>	Date : <b>6/14/2024</b>	Drawing / de dessin: <b>702087</b>		
Checked by / Vérifié par: <b>Luis ARMENTA</b>	Date : <b>6/14/2024</b>	Part / Article: <b>SEE TABLE</b>		Rev : Rév : <b>A</b>
Electrical Power 374 MERRIMAC STREET NEWBURYPORT, MA 01950	Éch / Scale : <b>1:4</b> Format / Size : <b>A</b>	Page : 1/1		
Ce plan strictement confidentiel est la propriété exclusive de la société MERSEN sans l'autorisation écrite de laquelle il ne peut être ni reproduit, ni copié, ni communiqué à des tiers. This drawing and specifications there on is property of MERSEN and shall not be reproduced or copied or used in whole or in part as the base for manufacture or sale of item without written permission.				

A083B1DAR0-100E
A083B1DAR0-80E
A083B1DAR0-65E
A083B1DAR0-50E
A083B1DAR0-40E
A083B1DAR0-30E
A083B1DAR0-25E
A083B1DAR0-20E
A083B1DAR0-15E
A083B1DAR0-10E
CATALOG NUMBER