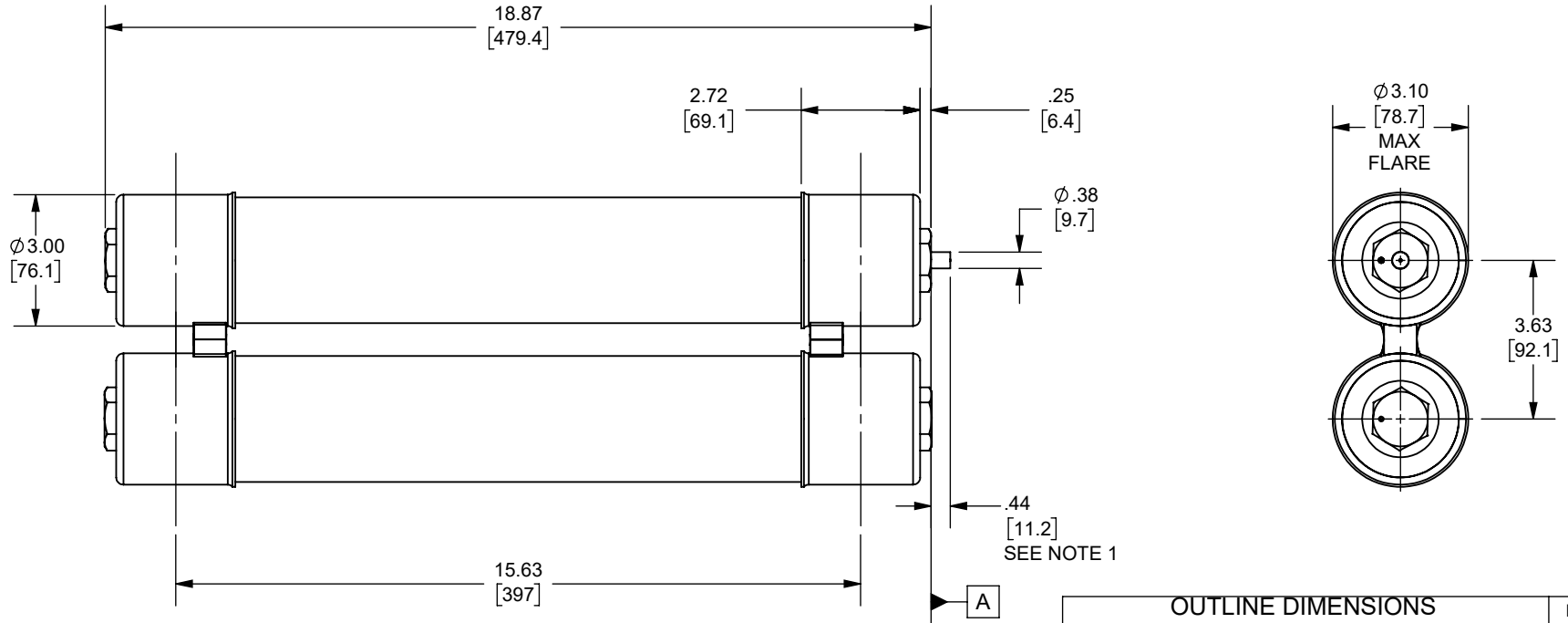


REV.	DATE	ECO	DESCRIPTION	BY	CK	APP
A	1/8/2024	18032	UPDATED TITLE BLOCK, DIM .44[11.2] WAS .50 [12.7], 1LBS FORCE WAS 2 LBS FORCE	YF	N/A	SEE ECO

NOTES:

- INDICATOR IS FLUSH WITH SURFACE **A** BEFORE FUSE OPENS
INDICATOR EXTENDS .44 IN. [11.2mm] AFTER FUSE OPENS AND EXERTS AN 1 LBF AT THE END OF TRAVEL



OUTLINE DIMENSIONS
NOT TO BE USED FOR PRODUCTION

DIMENSIONS IN [] ARE MILLIMETERS

<i>Approval stage / Etat d'approbation:</i> APPROUVÉ POUR FABRICATION / APPROVED FOR MANUFACTURING		<i>Product Class:/ Product Type:</i> MEDIUM VOLTAGE CS-3	
<i>Initial ECO / ECO intiale:</i> ECO-18032-000		<i>Product amp rating:/ Voltage rating:</i> 65-100E 15.5kV	
<i>Draw by / Dessiné par:</i> Yadyra Fang		<i>Date :</i> 1/8/2024	
<i>Checked by / Vérifié par:</i> Luis ARMENTA		<i>Date :</i> 6/13/2024	
<i>Electrical Power</i> 374 MERRIMAC STREET NEWBURYPORT, MA 01950		<i>Ech / Scale :</i> 1:4 <i>Format / Size :</i> A	
Title / Titre: <h1>OUTLINE</h1> A155F2D0R0-(65-100)E		<i>Weight / Masse :</i> 	
Drawing / de dessin: <h1>24395</h1>		<i>Rev / Rév :</i> A	
Part / Article: <h1>SEE TABLE</h1>		Page : 1/1	

A155F2D0R0-100E
A155F2D0R0-80E
A155F2D0R0-65E
CATALOG NUMBER

Ce plan strictement confidentiel est la propriété exclusive de la société MERSEN sans l'autorisation écrite de laquelle il ne peut être ni reproduit, ni copié, ni communiqué à des tiers.
 This drawing and specifications there on is property of MERSEN and shall not be reproduced or copied or used in whole or in part as the base for manufacture or sale of item without written permission.

