

# RECTICUR DO gR

440VDC & 440VAC (IEC)

## SEMICONDUCTOR PROTECTION FUSES

### IEC HIGH-SPEED D & DO FUSE-LINKS AC-DC PROTECTION



#### FEATURES & BENEFITS

- Insulated body suitable for high mechanical and thermal impacts
- Top and bottom contacts made of nickel-plated/silver-plated copper alloy
- Safe cut off short circuits and over currents due special design of fuse element
- Clear indication of operation condition due coloured indicator on top contact
- Low power dissipation
- Optimized size
- Resistant to aging

#### STANDARDS

- IEC 60 269-4
- DIN EN 60269-4 (VDE 0636-4)
- DIN VDE 0636-3

The DO fuse-system is the most modern of the screw systems in the German DIN standard. This system comprises the sizes D01, D02 and D03.

Those DO ultra-fast acting “gR” ranges are dedicated to semi-conductor protection, in applications where fuse-links are accessible to non-trained persons and can also be changed by them.

They are used for the protection of components such as diodes, thyristors or AC/DC motor drives. The “R” stands for the English word Rectifier. DO fuse-links are available at the rated current range from 2A up to 100A.

#### TECHNICAL DATA OVERVIEW

Voltage	440VAC - 440VDC
Ampere Range (A)	2 ... 200 A
Size per Standard	D01, D02, D03
Speed/Characteristic	gR
I.R. AC (IEC)	100 kA
Product Size	D01 to D03



# RECTICUR DO gR

440VDC & 440VAC (IEC)

## PRODUCT RANGE



D01GR44V2

### NEOZED RECTICUR IEC DIN TYPE D 01

Catalog number	Item number	Rated voltage AC (IEC)	Rated voltage DC (IEC)	Rated current I <sub>n</sub>	Pre-arcing I <sup>2</sup> t	Rated breaking capacity AC	Power dissipation at I <sub>n</sub>	Operating I <sup>2</sup> t at Rated Voltage	Package	Weight
D01GR44V2	M215038	440 V	440 V	2 A	3 A <sup>2</sup> s	100 kA	1.5 W	3 A <sup>2</sup> s	50	7 g
D01GR44V4	N218673	440 V	440 V	4 A	4 A <sup>2</sup> s	100 kA	2 W	5 A <sup>2</sup> s	50	7 g
D01GR44V6	B219191	440 V	440 V	6 A	5 A <sup>2</sup> s	100 kA	2.3 W	10 A <sup>2</sup> s	50	7 g
D01GR44V10	F219724	440 V	440 V	10 A	12 A <sup>2</sup> s	100 kA	2.2 W	25 A <sup>2</sup> s	50	7 g
D01GR44V16	N222169	440 V	440 V	16 A	40 A <sup>2</sup> s	100 kA	3.3 W	75 A <sup>2</sup> s	50	7 g



D02GR44V20

### NEOZED RECTICUR IEC DIN TYPE D 02

Catalog number	Item number	Rated voltage AC (IEC)	Rated voltage DC (IEC)	Rated current I <sub>n</sub>	Pre-arcing I <sup>2</sup> t	Rated breaking capacity AC	Power dissipation at I <sub>n</sub>	Operating I <sup>2</sup> t at Rated Voltage	Package	Weight
D02GR44V20	H222923	440 V	440 V	20 A	60 A <sup>2</sup> s	100 kA	4.3 W	110 A <sup>2</sup> s	25	13 g
D02GR44V25	R200713	440 V	440 V	25 A	90 A <sup>2</sup> s	100 kA	6 W	180 A <sup>2</sup> s	25	13 g
D02GR44V35	F201255	440 V	440 V	35 A	210 A <sup>2</sup> s	100 kA	8.4 W	410 A <sup>2</sup> s	25	13 g
D02GR44V50	R201771	440 V	440 V	50 A	830 A <sup>2</sup> s	100 kA	10 W	1650 A <sup>2</sup> s	25	13 g
D02GR44V63	Y207113	440 V	440 V	63 A	1300 A <sup>2</sup> s	100 kA	13.9 W	2500 A <sup>2</sup> s	25	13 g



D03GR44V100

### NEOZED RECTICUR IEC DIN TYPE D 03

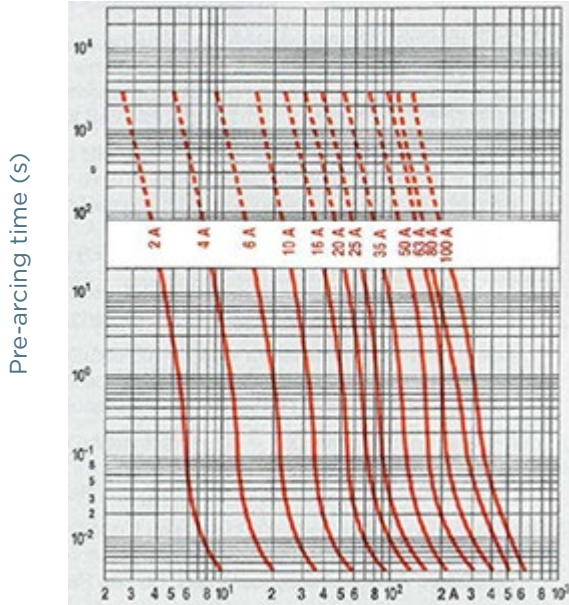
Catalog number	Item number	Rated voltage AC (IEC)	Rated voltage DC (IEC)	Rated current I <sub>n</sub>	Pre-arcing I <sup>2</sup> t	Rated breaking capacity AC	Power dissipation at I <sub>n</sub>	Operating I <sup>2</sup> t at Rated Voltage	Package	Weight
D03GR44V80	G211514	440 V	440 V	80 A	2100 A <sup>2</sup> s	100 kA	17.6 W	4300 A <sup>2</sup> s	10	41 g
D03GR44V100	L212024M	440 V	440 V	100 A	3300 A <sup>2</sup> s	100 kA	21 W	6600 A <sup>2</sup> s	25	41 g

# RECTICUR D0 gR

440VDC & 440VAC (IEC)

## TIME CURRENT CHARACTERISTIC CURVES

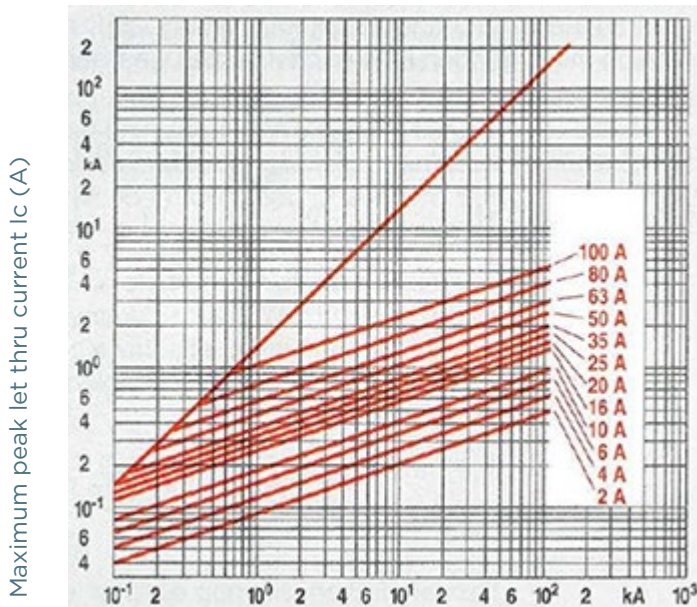
RECTICUR D01 D02 D03



RMS value of pre-arcing/melting current (A) +- 8%

## CUT-OFF CURRENT CHARACTERISTIC

RECTICUR D01 D02 D03

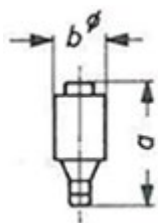


50 Hz RMS symmetrical prospective current I<sub>p</sub> (A)

# RECTICUR D0 gR

440VDC & 440VAC (IEC)

## DIMENSIONS



Size (mm)	a	b ø
D01	36	11
D02	36	15,3
D03	43	22,5