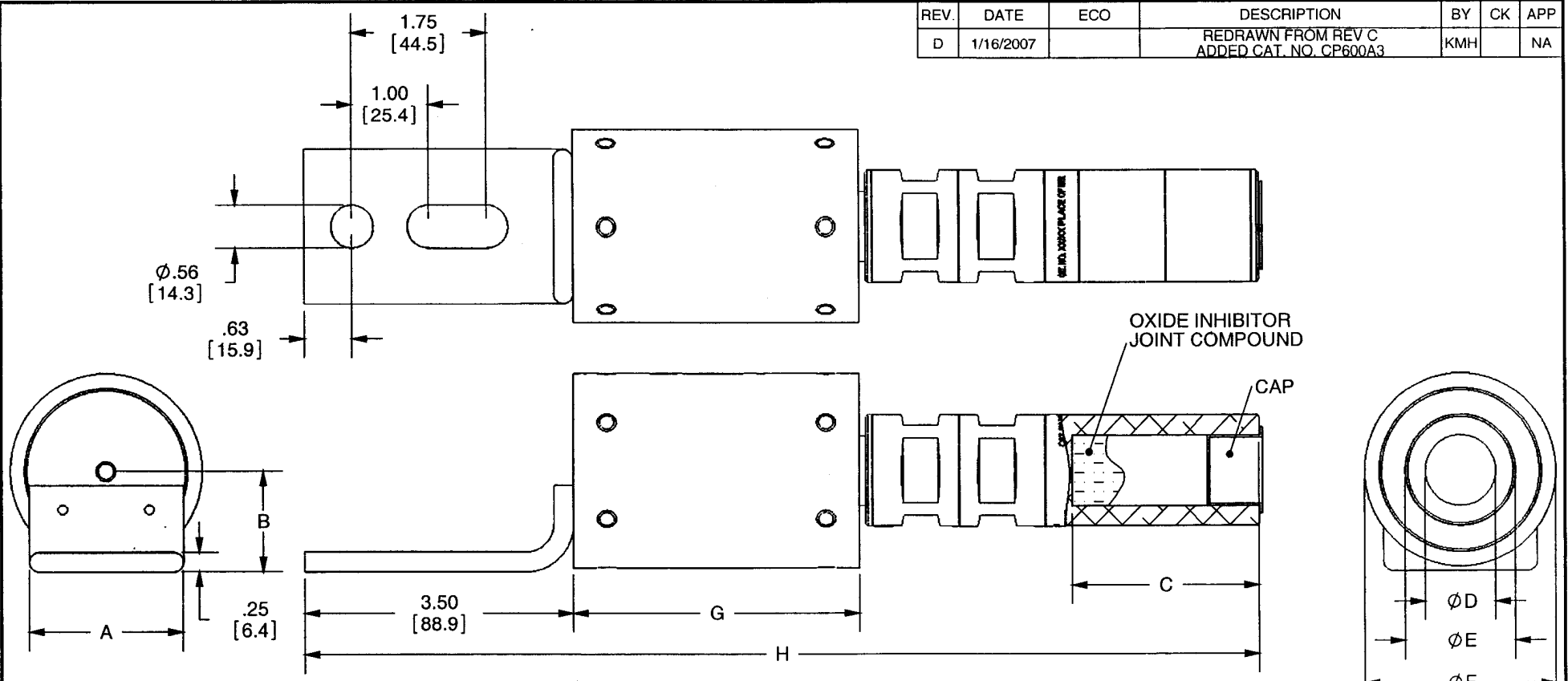


REV.	DATE	ECO	DESCRIPTION	BY	CK	APP
D	1/16/2007		REDRAWN FROM REV C ADDED CAT. NO. CP600A3	KMH		NA



CP750A3	750MCM	2.00 [50.8]	1.31 [33.2]	2.88 [73.2]	1.03 [26.2]	1.59 [40.4]	2.50 [63.5]	3.75 [95.3]	13.12 [333.2]
CP600A3	600MCM	2.00 [50.8]	1.31 [33.2]	2.44 [62.0]	.92 [23.4]	1.44 [36.6]	2.50 [63.5]	3.75 [95.3]	13.12 [333.2]
CP500A3	500MCM	1.62 [41.3]	1.19 [30.2]	2.88 [73.2]	.84 [21.2]	1.31 [33.3]	1.88 [47.6]	3.62 [92.1]	13.00 [330.2]
CP350A3	350MCM	1.12 [28.6]	.96 [24.3]	2.50 [63.5]	.71 [18.0]	1.13 [28.7]	1.62 [41.3]	3.62 [92.1]	12.25 [311.2]
CP250A3	250MCM	1.12 [28.6]	.96 [24.3]	2.50 [63.5]	.59 [15.1]	.94 [23.7]	1.44 [36.5]	3.62 [92.1]	12.25 [311.2]
CP4/0A3	4/0	1.12 [28.6]	.96 [24.3]	2.50 [63.5]	.54 [13.8]	.84 [21.5]	1.44 [36.5]	3.62 [92.1]	12.25 [311.2]
CATALOG NUMBER	CABLE SIZE	A	B	C	ϕD	ϕE	ϕF	G	H

NOTE:

- FOR HEAT SHRINKABLE TUBING ADD "HS" TO CAT. NO. EXAMPLE: CP750A3-HS

DIMENSIONS IN [] ARE MILLIMETERS

OUTLINE DIMENSIONS NOT TO BE USED FOR PRODUCTION

17712



FERRAZ SHAWMUT INC.
374 MERRIMAC STREET
NEWBURYPORT, MA 01950

CABLE PROTECTORS
CABLE TO OFF-SET BUSS
TYPE A3
CP4/0A3 THRU CP750A3
ALUMINUM CABLE

PRODUCT MANAGER
SIGN: *RMT Dyer A*
DATE: 3/29/07

DESIGN ENGINEER
SIGN: *S. K...*
DATE: 3/29/07