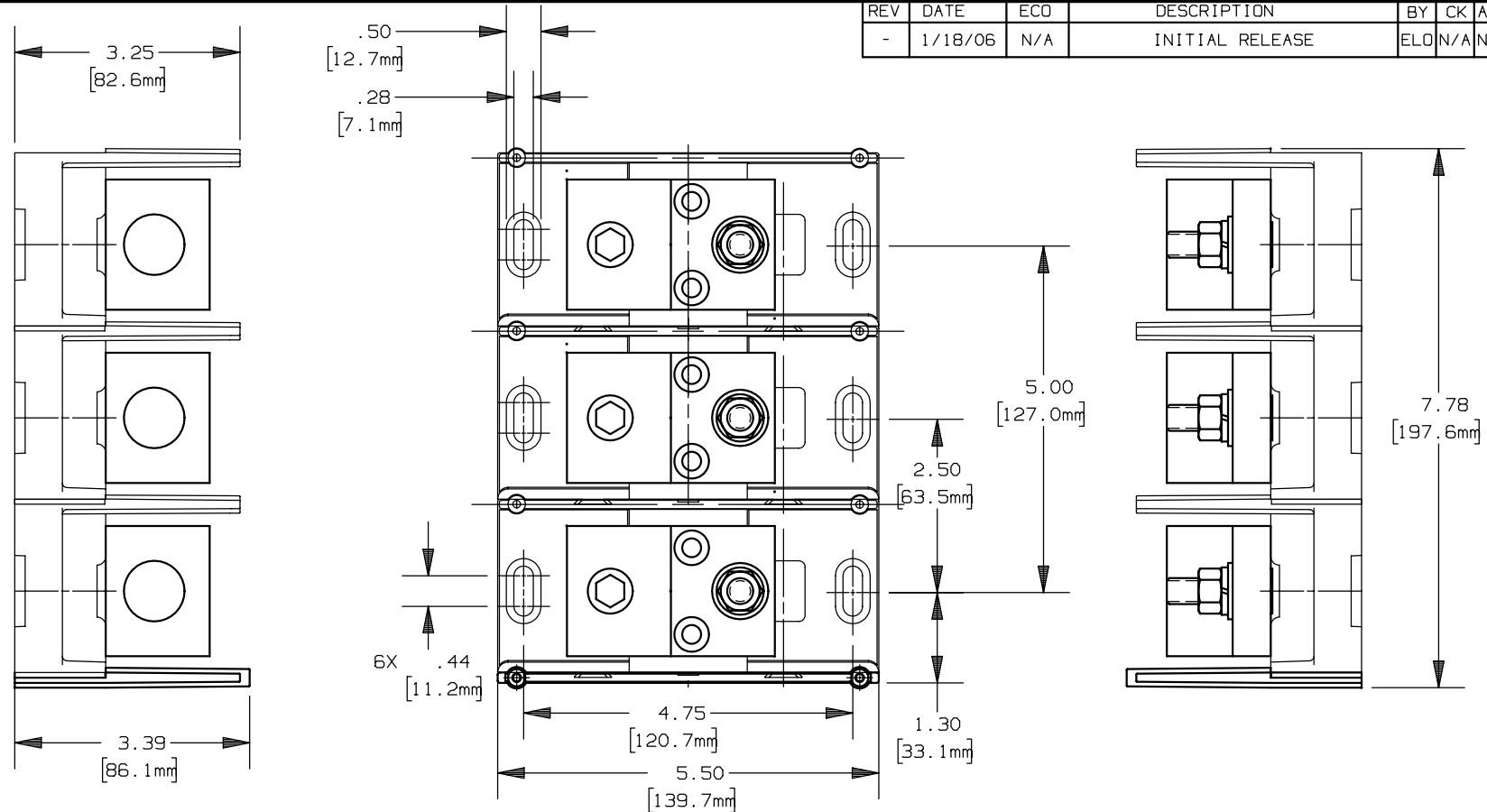


REV	DATE	ECO	DESCRIPTION	BY	CK	APP
-	1/18/06	N/A	INITIAL RELEASE	ELO	N/A	N/A



P/N	CONN. MAT'L.	WIRE RANGE & TORQUE (LBS-IN)				UL		CSA	
		PRIMARY		SECONDARY		FILE #	GUIDE #	FILE #	CLASS
		RANGE	TORQUE	RANGE	TORQUE				
68213	Cu	500-#4	375	3/8-16 X1 STUD	228	E73571	XCFR2	69363	6228
69213	Al	500-#4	500	3/8-16 X1 STUD	228	E73571	XCFR2	15469	3211

NOTES:

- MATERIAL COMPOSITION AND RATING:
BASE: THERMOPLASTIC 125°C RTI
CONNECTOR: ALUMINUM OR COPPER ALLOY-TIN PLATED
- TOLERANCES ARE ±.01 UNLESS OTHERWISE SPECIFIED.

MERSEN MERSEN USA NEWBURYPORT-MA, LLC
374 MERRIMAC STREET
NEWBURYPORT, MA 01950

PRODUCT MANAGER	DESIGN ENGINEER
SIGN:	SIGN:
DATE:	DATE:

POWER DISTRIBUTION BLOCK

(1) 500MCM-#4 X (1) 3/8-16 X 1 STUD
3 POLE 600V

OUTLINE DIMENSIONS
NOT TO BE USED FOR PRODUCTION

701251