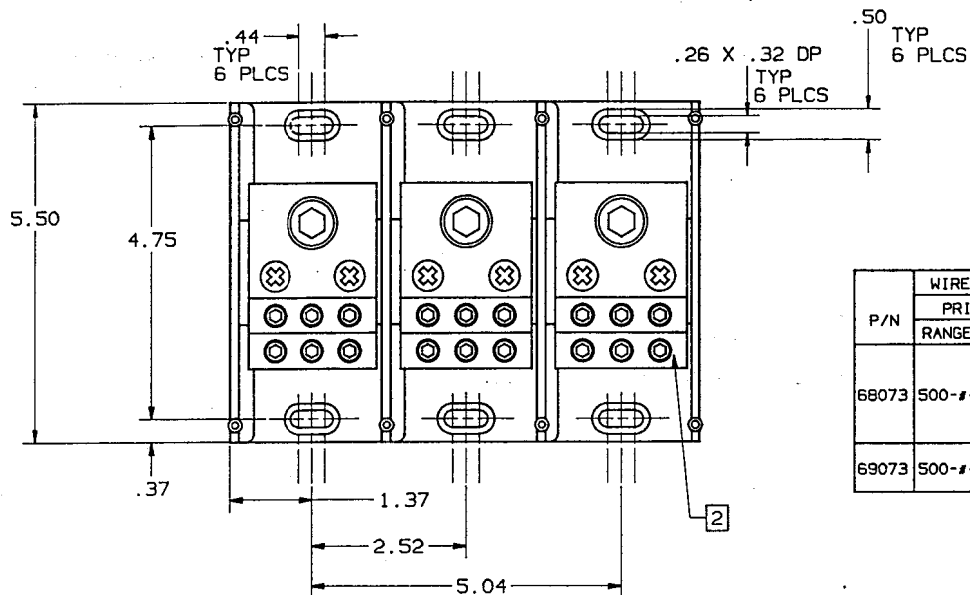
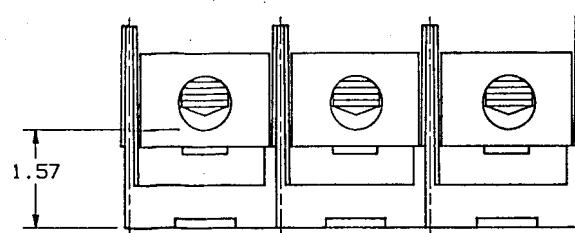
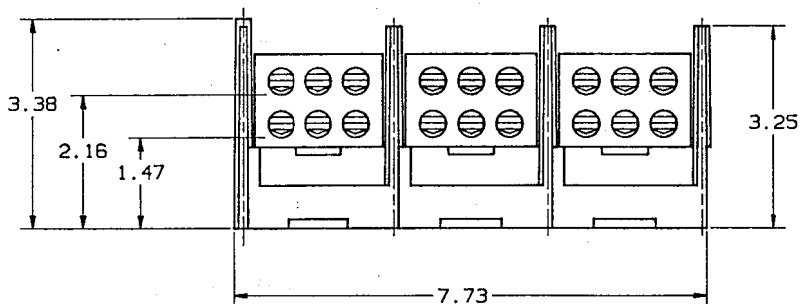


REV	DESCRIPTION	DATE	APPD
0	RELEASED	1/11/82	2/01
01	REVISED PER ECD 90-007	2/17/90	2/01
02	REVISED PER ECD 90-024	8/28/90	1/07



P/N	WIRE RANGE & TORQUE (IN-LBS)				U/L		CSA	
	PRIMARY		SECONDARY		FILE NO.	GUIDE NO.	REPORT NO.	
	RANGE	TORQUE	RANGE	TORQUE				
68073	500-#4	375	2/0-#12	2/0-#3	50	E73571	XCFR2	LR69363
				#4-#6	45			
				#8	40			
				#10-#12	35			
69073	500-#4	500	2/0-#12	2/0-#6	120	E73571	XCFR2	LR15469
				#8-#12	50			



P/N 69073 (CU-AL)
P/N 68073 (CU ONLY)

REFERENCE

MAR 16 1992

2 P/N 68073 USES SLOTTED SET SCREW
P/N 69073 USES HEX SET SCREW.

1. MATL COMPOSITION AND RATING: BASE-POLYCARBONATE-125°C RTI.
CONNECTOR-ALUMINUM OR COPPER ALLOY-TIN PLATED.

NOTES: UNLESS OTHERWISE SPECIFIED

NOTES UNLESS OTHERWISE SPECIFIED		MATERIAL		GOULD SHAWMUT	
- ALL DIMENSIONS ARE IN INCHES - STAMP OR ETCH Dwg. NO. ON PART - REMOVE ALL BURRS AND SHARP EDGES - TOLERANCES: XXXX+.0005; XXXX-.005; XXX.01; XX.04; ANGLES 40°30'		FINISH		GOULD SHAWMUT P. O. BOX 729 MARBLE FALLS, TX 78654	
THIS DRAWING AND ALL INFORMATION THEREON IS THE PROPERTY OF GOULD. IS CONFIDENTIAL. MUST NOT BE COPIED OR MADE PUBLIC UNLESS AUTHORIZED AND IS SUBJECT TO RETURN ON DEMAND.		SIGNATURE		PRODUCT INFO TITLE PDB, (1) 500 MCM- #4 X (6) 2/0-#12 3 POLE PC 600V	
DATE	REV	DATE	REV	DWG NO	REV
1/11/82	01	2/17/90	02	05C0254	02
1/11/82	01	2/17/90	02	SCALE	FILE NO
1/11/82	01	2/17/90	02	3/4	1 of 1