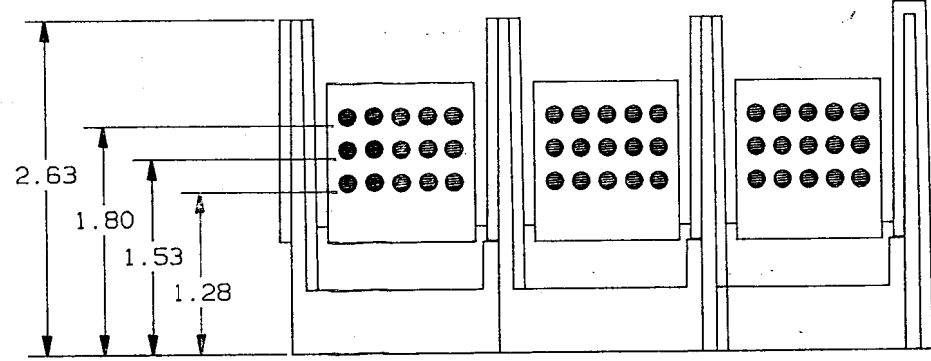


REV	DATE	ECO	DESCRIPTION	BY	CK
00	10/14/94		RELEASED	GO	

CONTROLLED COPY  
 ISSUED TO Newburyport  
 DATE OCT 18 1994

P/N	WIRE RANGE & TORQUE (IN-LBS)					UL		CSA
	PRIMARY		SECONDARY			FILE #	GUIDE #	REPORT #
	RANGE	TORQUE	RANGE	TORQUE				
66623	350 MCM- #6	350 MCM- #6 275	#10-#14	#10-#14 15	E73571	XCFR2	LR69363	
67623	350 MCM- #6	350 MCM- #6 275	#10-#14	#10-#14 15	E73571	XCFR2	LR15469	



2. (1) 350MCM X (15) #10, 3 POLE, 600V.

1. MATERIAL COMPOSITION AND RATING:  
 BASE: THERMOPLASTIC 125°C RT1  
 CONNECTOR: ALUMINUM OR COPPER ALLOY-TIN PLATED

P/N 66623 (CU ONLY)  
 67623 (CU-AL)

NOTES: UNLESS OTHERWISE SPECIFIED

<b>GOULD</b> GOULD INC. P.O. BOX 728 HABLE FALLS, TX 78854 CIRCUIT PROTECTION DIV.	TOLERANCE TO BE APPLIED UNLESS OTHERWISE SPECIFIED: .X000A, .00001, .X000A, .0001, .X00A, .011, .XA, .021, X/94/728 UNLESS OTHERWISE SPECIFIED: UNLESS OTHERWISE SPECIFIED ALL SURFACES TO BE 12μ UNLESS OTHERWISE SPECIFIED	
	DRAWN BY: KDS DATE: 10/94	INT. REL. DATE: 10/94
	CHECKED BY: AE DATE: 10/94	SCALE: NONE
	DESCRIPTION: PDB	IDENTIFICATION NO. & REVISION: 05B0498 00