

REV	DESCRIPTION	DATE	APPO
0	RELEASED	9/24/87	

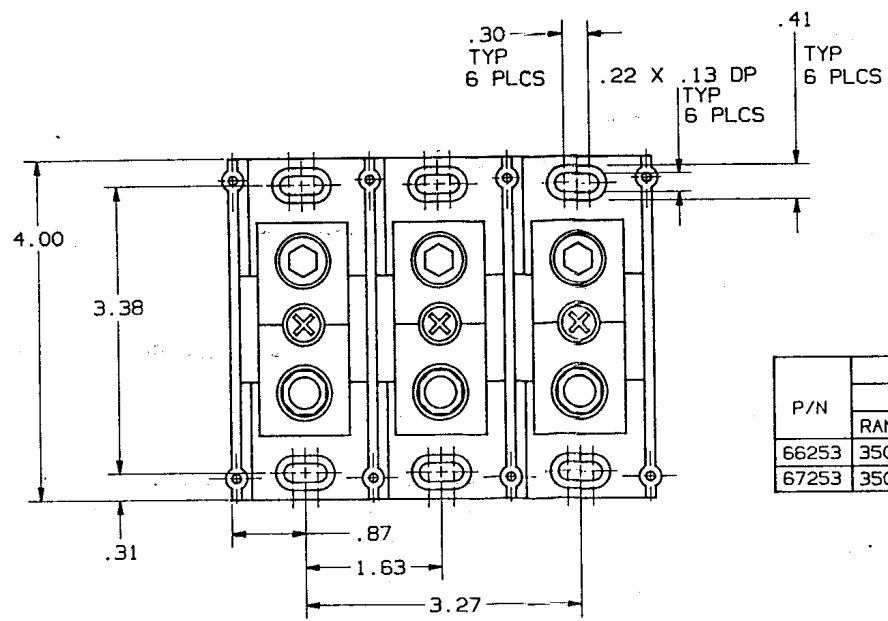
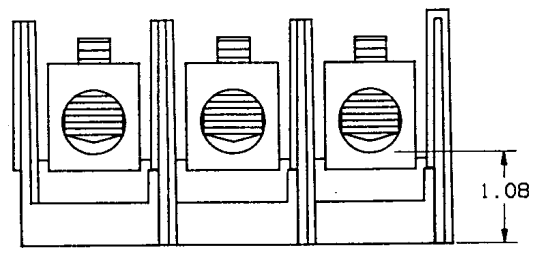
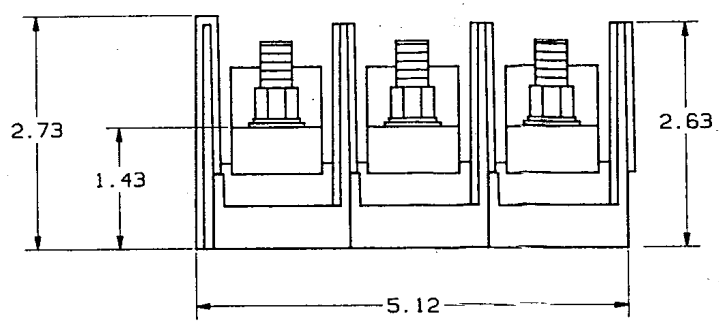


TABLE I

P/N	WIRE RANGE & TORQUE (IN-LBS)						U/L		CSA
	PRIMARY			SECONDARY			FILE NO.	GUIDE NO.	REPORT NO.
	RANGE	TORQUE		RANGE	TORQUE				
66253	350-#6	350-#6	275	3/8-1	3/8-1	228	E73571	XCFR2	LR69363
67253	350-#6	350-#6	275	3/8-1	3/8-1	228	E73571	XCFR2	LR15469



REFERENCE

MAR 16 1992

P/N 66253 (CU ONLY)
P/N 67253 (CU-AL)

1. MATL COMPOSITION AND RATING: BASE-POLYCARBONATE-125°C RTI
CONNECTOR-ALUMINUM OR COPPER ALLOY-TIN PLATED.

NOTES: UNLESS OTHERWISE SPECIFIED

NOTES UNLESS OTHERWISE SPECIFIED - ALL DIMENSIONS ARE IN INCHES - STAMP OR ETCH DAG. NO. ON PART - REMOVE ALL BURRS AND SHARP EDGES - TOLERANCES: XXXX+.0005; XXXX-.005; XX+.01; X+.04; ANGLES 40°/30°		MATERIAL FINISH SIGNATURES DATE DRWG: Williams 9/20/87 CHKD: G. Orley 9/20/87 ENGRD APPR: [Signature] 9/24/90		GOULD SHAWMUT GOULD SHAWMUT P. O. BOX 729 MARBLE FALLS, TX 78654 PRODUCT INFO TITLE PDB. (1)350MCM-#6 X (1)3/8-1 STUD 3 POLE 600V DWG NO. 05C0285 FILE NO. 1/1 REV 00 SHEET 1 of 1	
---	--	---	--	--	--