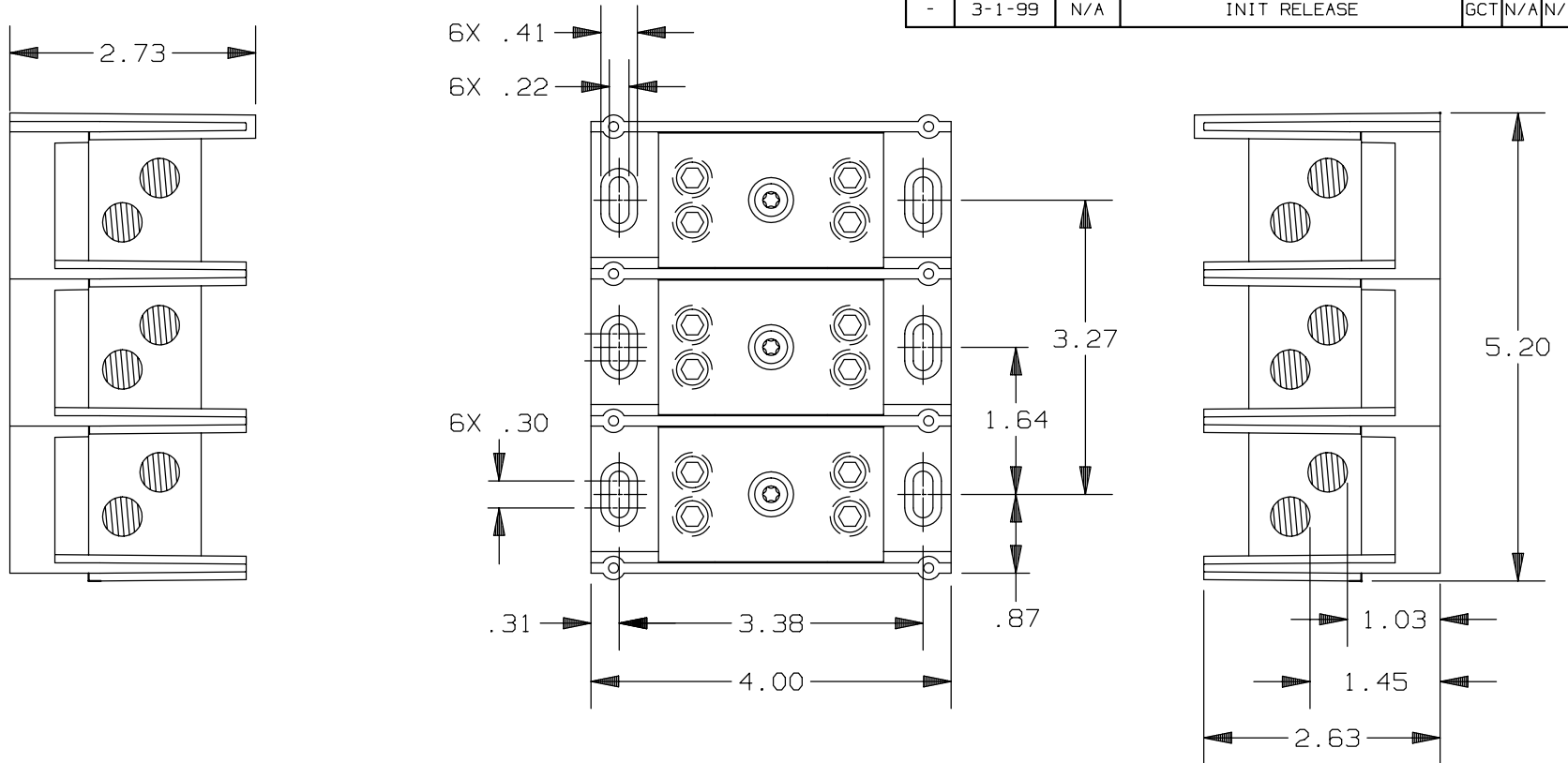


CONTROL No: 111

| REV | DATE | ECO | DESCRIPTION | BY | CK | APP |
|-----|--------|-----|--------------|-----|-----|-----|
| - | 3-1-99 | N/A | INIT RELEASE | GCT | N/A | N/A |



| P/N | WIRE RANGE & TORQUE (IN-LBS) | | | | UL | | CSA | |
|-------|------------------------------|---------|-----------|---------|--------|---------|----------|---------|
| | PRIMARY | | SECONDARY | | FILE # | GUIDE # | REPORT # | |
| | RANGE | TORQUE | RANGE | TORQUE | | | | |
| 66023 | 2/0-#14 | 2/0-#3 | 50 | 2/0-#3 | 50 | E73571 | XCFR2 | LR69363 |
| | | #4-#6 | 45 | #4-#6 | 45 | | | |
| | | #8 | 40 | #8 | 40 | | | |
| | | #10-#14 | 35 | #10-#14 | 35 | | | |
| 67023 | 2/0-#14 | 2/0-#6 | 120 | 2/0-#6 | 120 | E73571 | XCFR2 | LR15469 |
| | | #8-#14 | 50 | #8-#14 | 50 | | | |

NOTES:

- MATERIAL COMPOSITION AND RATING:
BASE: THERMOPLASTIC 125°C RTI
CONNECTOR: ALUMINUM OR COPPER ALLOY-TIN PLATED
- TOLERANCES ARE ±.01 UNLESS OTHERWISE SPECIFIED.

P/N 66023 (CU ONLY)
67023 (CU-AL)

Ferraz Shawmut
FERRAZ SHAWMUT INC.
374 MERRIMAC STREET
NEWBURYPORT, MA 01950

POWER DISTRIBUTION BLOCK

OUTLINE DIMENSIONS
NOT TO BE USED FOR PRODUCTION

PRODUCT MANAGER

DESIGN ENGINEER

SIGN:
DATE:

SIGN:
DATE:

(2) 2/0-#14 X (2) 2/0-#14
3 POLE 600V

700421