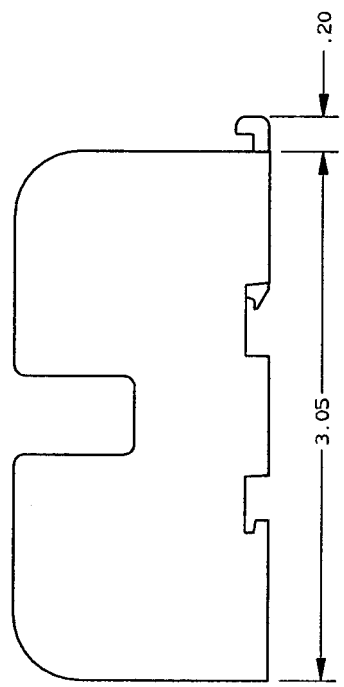
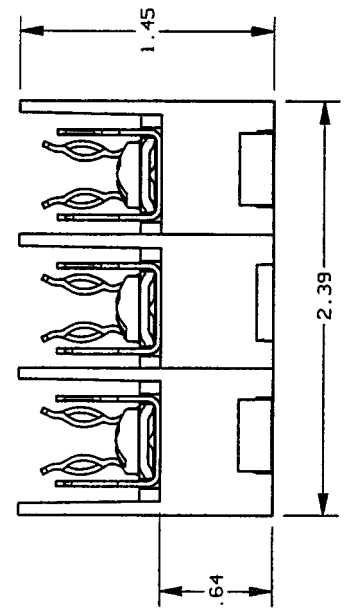
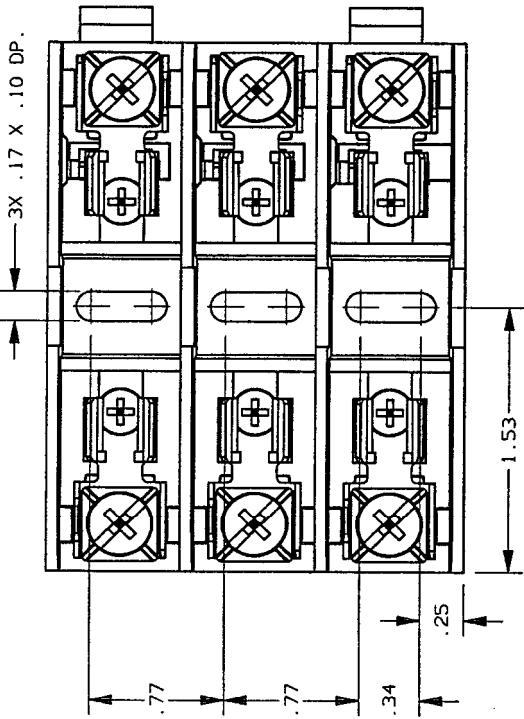


REV	DATE	ECO	DESCRIPTION	BY	CK	APP
-	4-15-99	N/A	INITIAL RELEASE	LDB	N/A	N/A



NOTES:

1. MATERIAL COMPOSITION AND RATING:
BASE - THERMOPLASTIC 125°C RTI
2. ALL TOLERANCES ± .010 UNLESS OTHERWISE NOTED

P/N	CONN TYPE	RMS SYM RATING	TORQUE (IN-LBS)	WIRE °C	TYPE	FILE NO.	U/L	CSA REPORT NO.
403236	PRESSURE	100K	20	60/75	CU ONLY	E52283	1ZLT	LR32169

GOULD
 374 MERRIMAC STREET
 NEWBURYPORT, MA 01950

PRODUCT MANAGER
 SIGN: *Michael R. ...*
 DATE: 5-10-99

DESIGN ENGINEER
 SIGN: *Elizabeth ...*
 DATE: 5/10/99

FUSE BLOCK, 480V-30A, 3 POLE
 CLASS G

OUTLINE DIMENSIONS
 NOT TO BE USED FOR PRODUCTION

700475