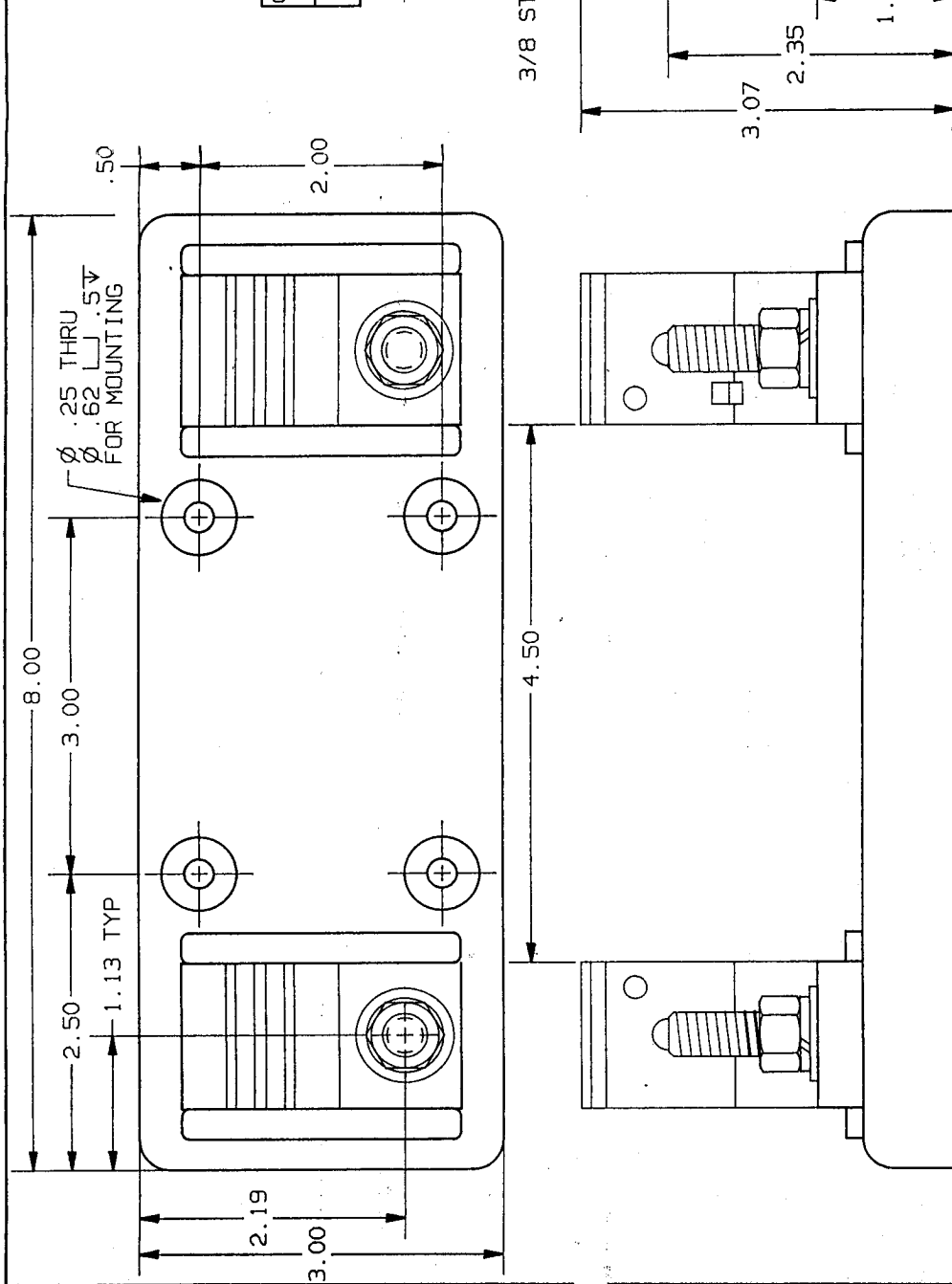


REV	DATE	ECO	DESCRIPTION	BY	CK
00	11/11/94		RELEASED	LS	

GOULD P/N	CONN TYPE	TORQUE (IN-LBS)	UL FILE NO.	GUIDE NO.	CSA REPORT NO.
22011	STUD	228	ES2283	IZLT2	LR32169

CONTROLLED COPY
 NEWBURYPORT



3. NOT INTENDED FOR USE ON HIGH-AVAILABLE FAULT-CURRENT CIRCUITS.
 2. SPRING REINFORCEMENT NOT SHOWN.
 1. MATERIALS: BASE - PHENOLIC
 HARDWARE - TIN PLATED COPPER ALLOY
- NOTES: UNLESS OTHERWISE SPECIFIED

GOULD FIELD INC.
 1000 W. 17th St.
 CIRCUIT PROTECTION DIV. PLYMOUTH, MI 48178

DATE: 11/94
 DRAWN BY: KDS
 CHECKED BY:

SCALE: NONE
 REFDOC:

DESCRIPTION: FUSE BLOCK, 250V-200A 1P 05B0500

UNIFICATION NO. & REVISION: 00

P/N 22011

TELEPHONE TO BE APPLIED UNLESS OTHERWISE SPECIFIED: 200A D001, 200A D001, 200A 011, UNLESS OTHERWISE SPECIFIED. SPECIFIED AND UNLESS OTHERWISE SPECIFIED AFTER PLATING DIMENSIONS APPLY TO BE 10% UNLESS OTHERWISE SPECIFIED. THIS DRAWING AND INFORMATION THEREON IS THE PROPERTY OF GOULD INC. AND IS SUBJECT TO PATENT RIGHTS. NO PART OF THIS DRAWING OR INFORMATION THEREON IS TO BE REPRODUCED OR TRANSMITTED IN ANY FORM OR BY ANY MEANS, ELECTRONIC OR MECHANICAL, WITHOUT PERMISSION IN WRITING FROM GOULD INC.